

Practical early detection

See clearly. Decide confidently.™



SoftView™
Enhanced Chest Imaging

SoftView™
Enhanced Chest Imaging

A Riverain Medical Technology

A visible difference

SoftView™ is an innovative image enhancement technology that is designed to increase the clarity of chest X-rays by suppressing bone on the digital image. This enterprise-wide solution uses existing X-ray equipment, providing a soft tissue image for digital chest X-rays.

Key Advantages

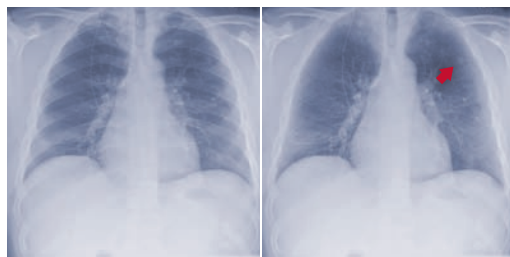
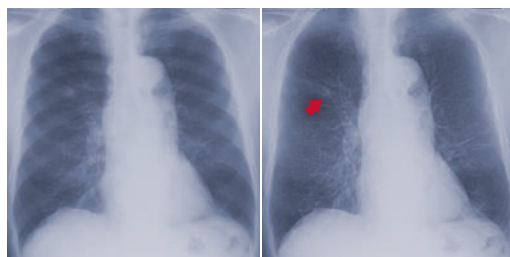
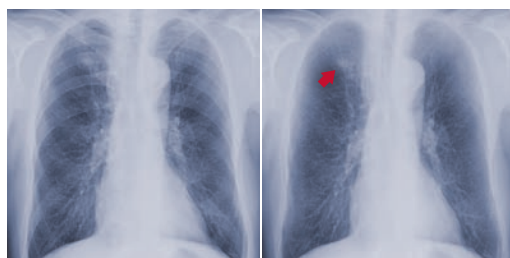
- Increases confidence in your image interpretation by improving the visibility of soft tissue
- Enterprise-wide solution providing a soft tissue image for digital chest X-rays
- Uses existing chest X-ray—no additional procedure or dose to the patient
- Soft tissue image is automatically included in patient record for convenient viewing
- Provides enhanced workflow efficiency
- Advanced visualization with your PACS
- Benefits patients in multiple hospital settings:
 - Radiology
 - ICU/CCU
 - ER



SoftView™ Enhanced Chest Imaging

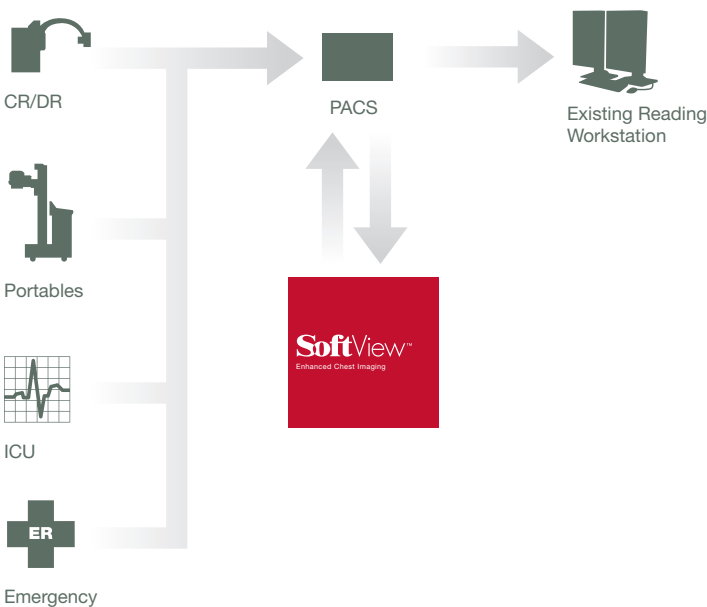
SoftView increases the clarity of chest X-rays by suppressing bone on the digital image for more confident image interpretations.

Standard Digital X-ray SoftView Images



Integration and Workflow

SoftView is an enterprise-wide solution that uses existing X-ray equipment to provide a soft tissue image for digital chest X-rays. Featuring universal PACS connectivity, **SoftView seamlessly integrates into any digital radiology department** and provides immediate display of the soft tissue images on the existing PACS viewer, eliminating the need for a separate workstation.





Riverain Medical

Riverain Medical technologies are designed to enhance the expert skills of radiologists. Our solutions can help improve the detection and diagnosis of diseases and other physical conditions, improving the quality of life of patients and saving lives. Used in conjunction with any digital chest X-ray, our enterprise-wide solutions require no additional patient procedures or radiation doses and seamlessly integrates into existing PACS systems.

To learn more:

Contact us at (800) 990-3387 or visit www.riverainmedical.com.



Riverain Medical
3020 South Tech Boulevard
Miamisburg, Ohio 45342-4860
P: +1 800.990.3387
F: +1 937.425.6493

www.riverainmedical.com

©2009 Riverain Medical. All rights reserved.
SoftView Patent pending.

11/09